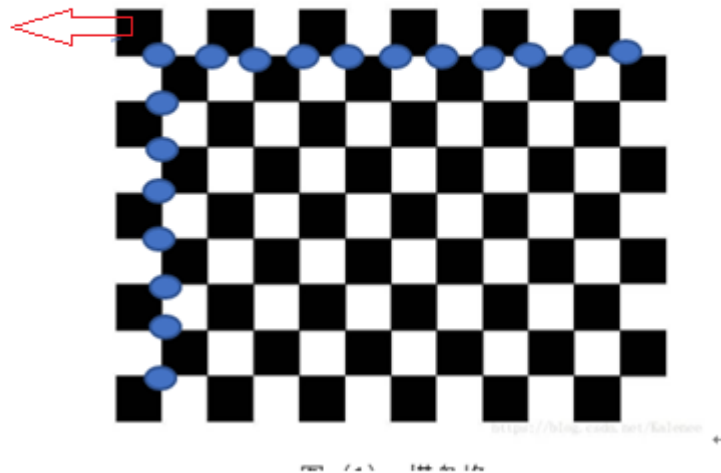


Pick out the bad image, right-click the image and click delete. QR code camera calibration and notes

1. Making QR code labels

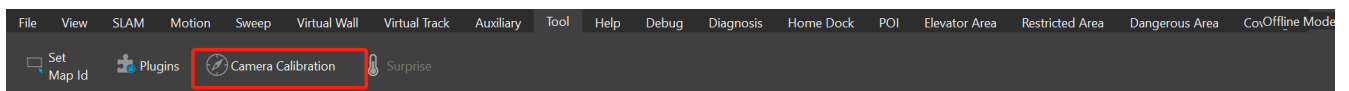
Print the nearby checkerboard grid on A4 paper and post it on the flat board, paying attention to the flatness of the posting, which will make a big impact. Pay attention to the orientation of the QR code, the black grid is the upper left corner of the checkerboard grid.

Black grid at the upper left corner

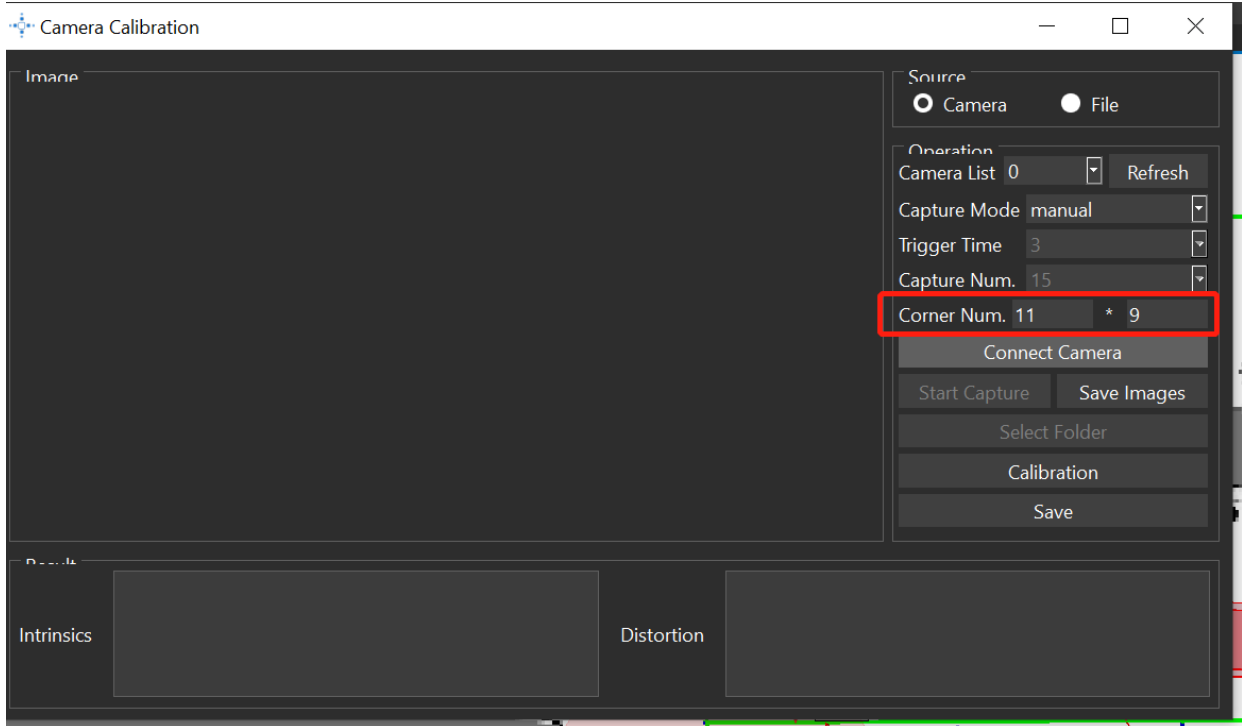


2. Calibration based on RS

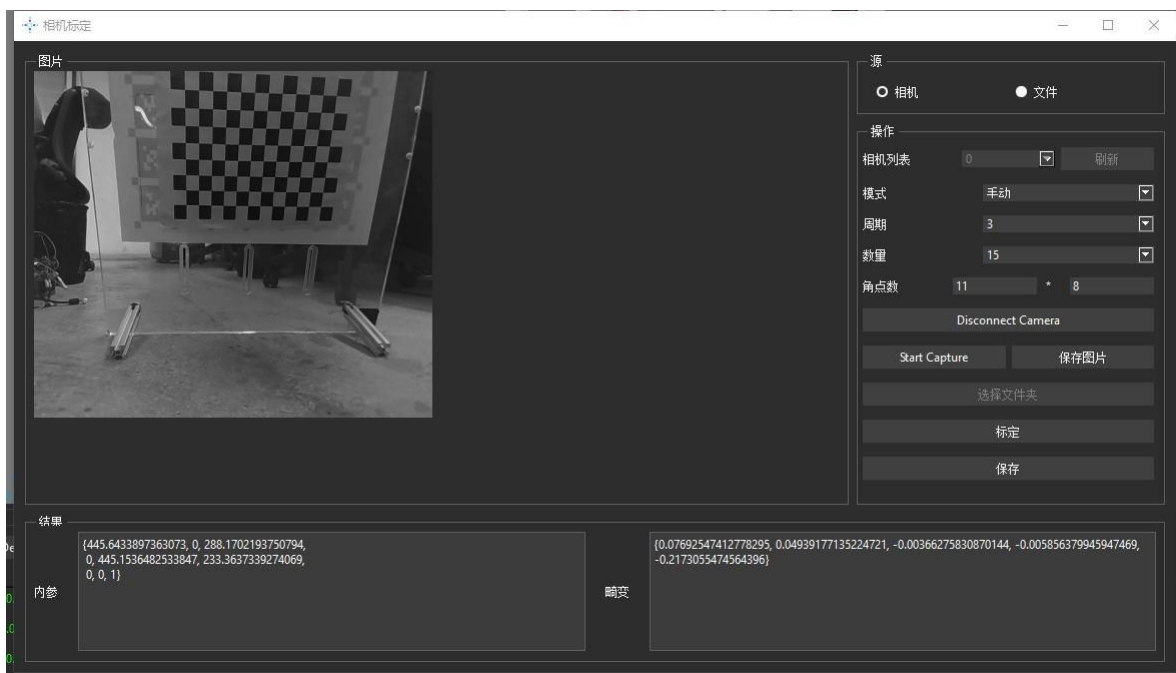
- Open rs and connect the robot. (PS: the robot must have a QR code camera)
- Click on the **camera calibration**, the camera calibration interface pops up



- Fill in the number of corner points.** The number of corner points is the number of blue dots in the grid above, the number of corner points in the grid above is $11 * 9$

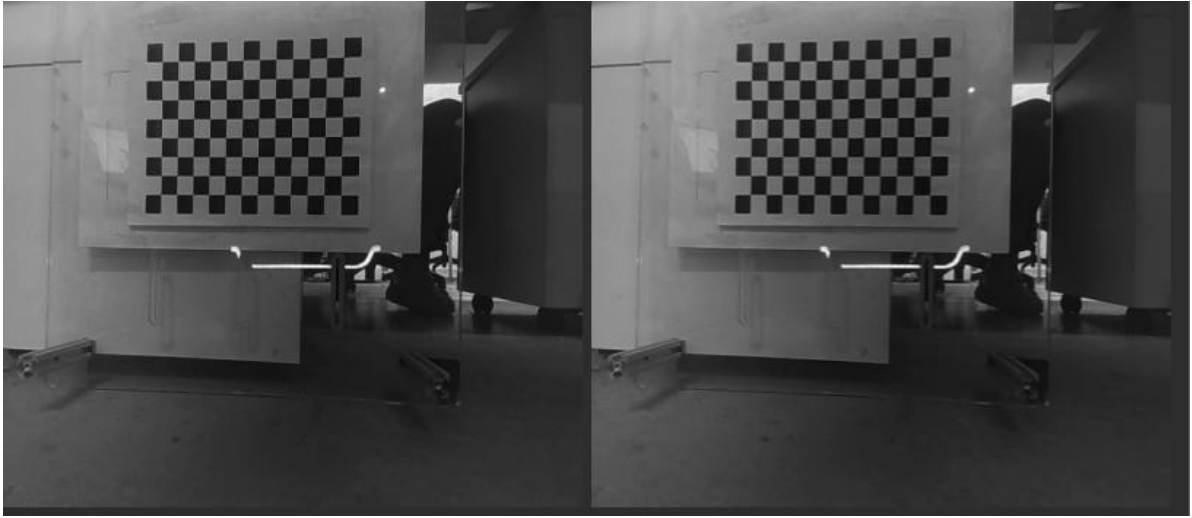


D. **Connect the camera**, get the real-time image of the QR code camera, align the QR code camera with the checkerboard grid from **different angles and at different distances**, make ensure **the checkerboard grid is all** inside the **image**. Click Start capture and capture 20 images. Make sure that the checkerboard grid is as large as possible in the image.

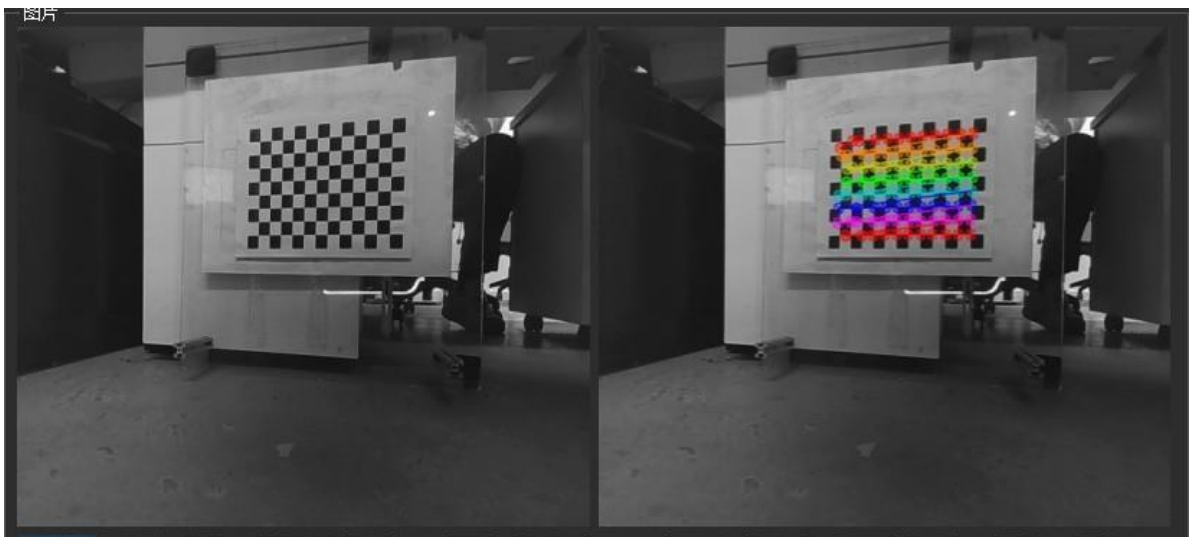


E. Click on the captured image, select and delete the bad image, the bad image includes the undetectable corner points (i.e., no color lines), the detection of corner points is obviously wrong (corner points should be parallel to several rows, several columns, such as the following figure, obviously wrong detection.) If you want to delete a bad image, pick out the bad image, right-click the image and click delete.

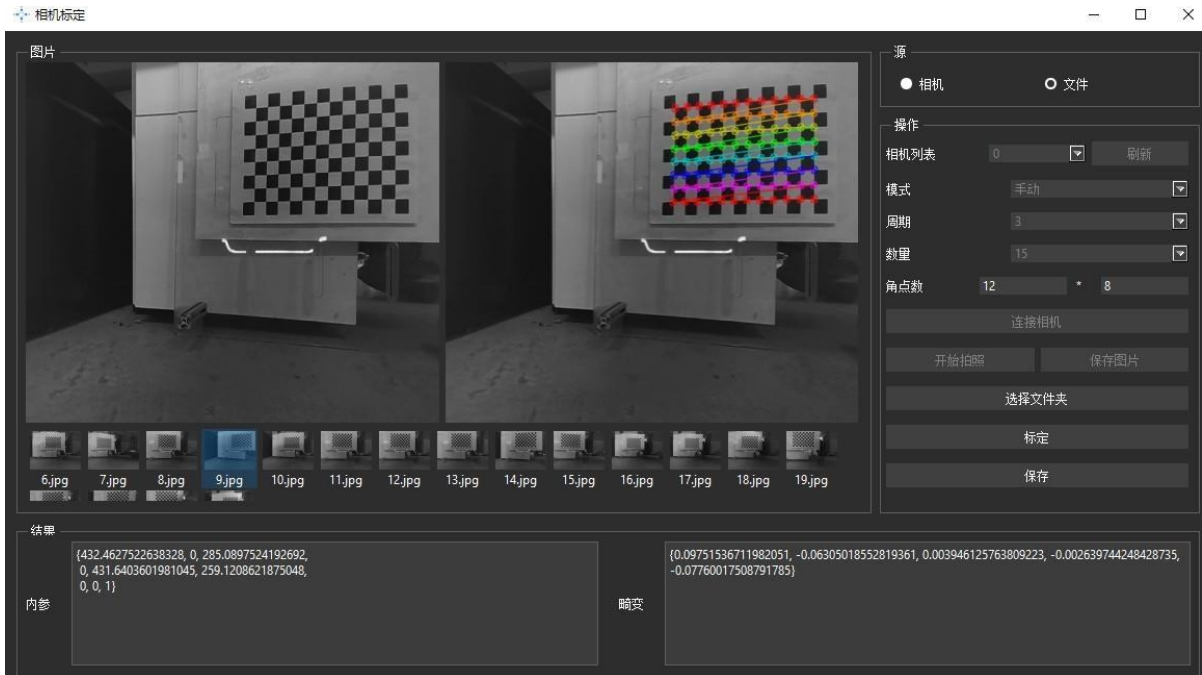
Example 1, this image is unable to detect the corner point.



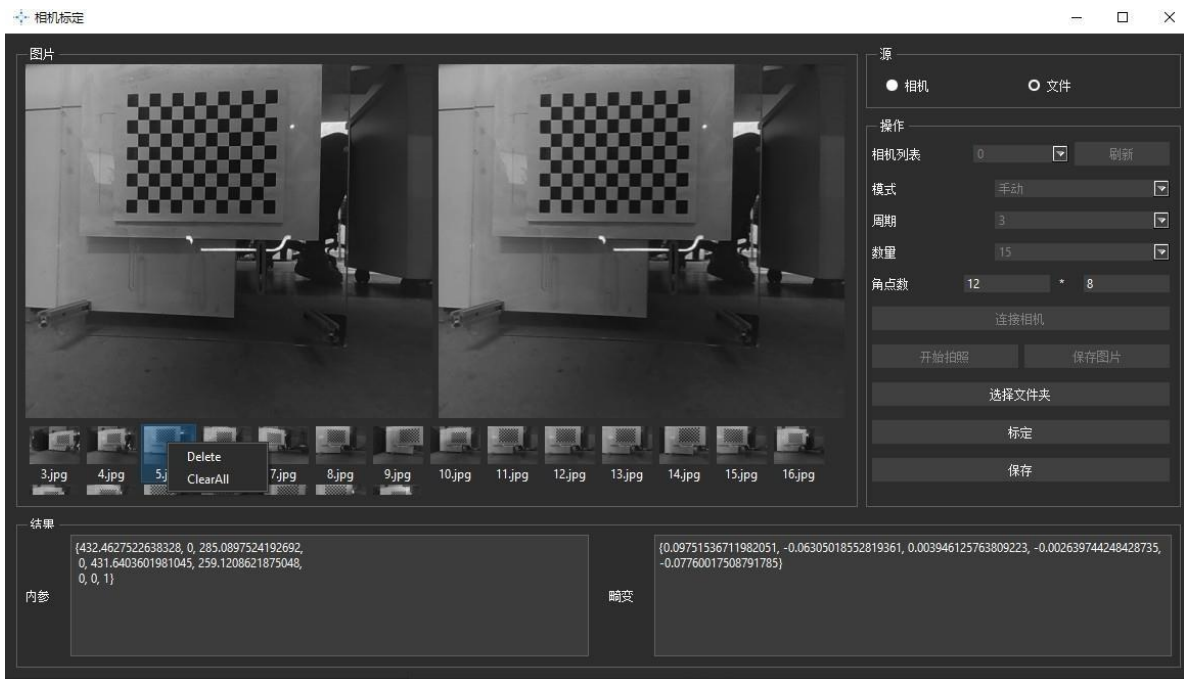
Example 2: The following two images are bad images, the images obviously detect the wrong corner points, you can see that the blue row and the pink row are obviously not the correct corner points.



Example 3, good detection results, detected corner points, smooth, regular and perfect.



Right-click the bad image and click delete to delete the bad image.



F After deleting the bad images, make sure there are 15 more images with different angles and distances, and then click on the calibration

Source

Camera File

Operation

Camera List 0

Capture Mode manual

Trigger Time 3

Capture Num. 15

Corner Num. 11 * 9

Connect Camera

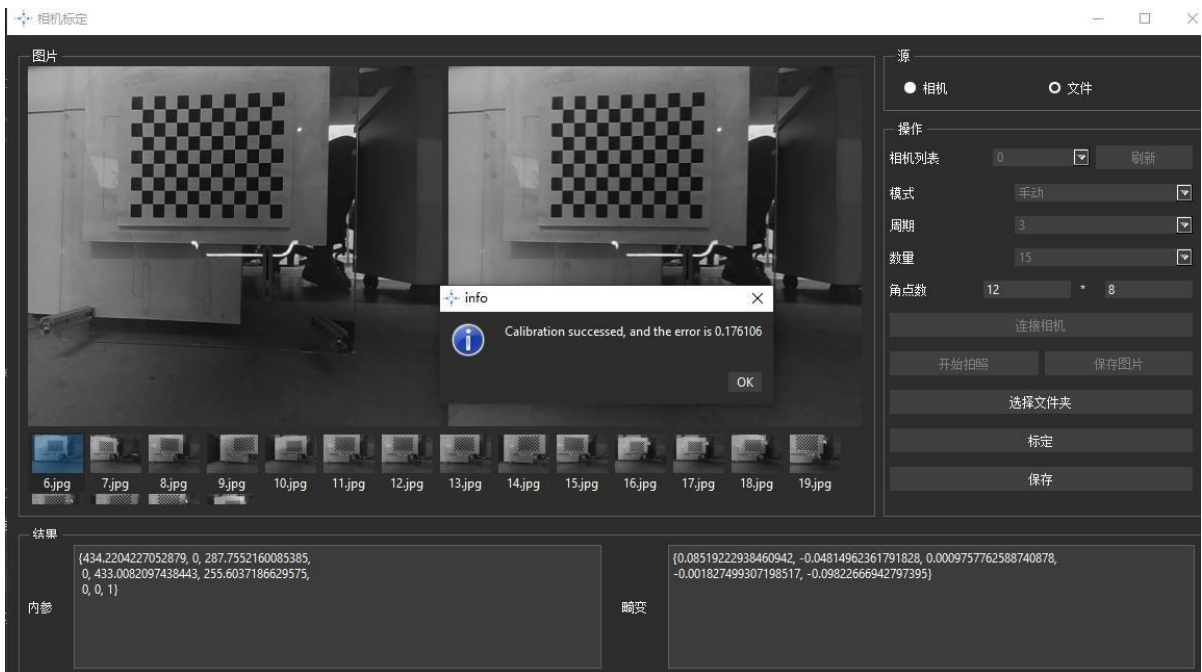
Start Capture Save Images

Select Folder

Calibration

Save

A successful calibration will bring up the calibration succeeded



G. Click Save to complete the calibration procedure.

